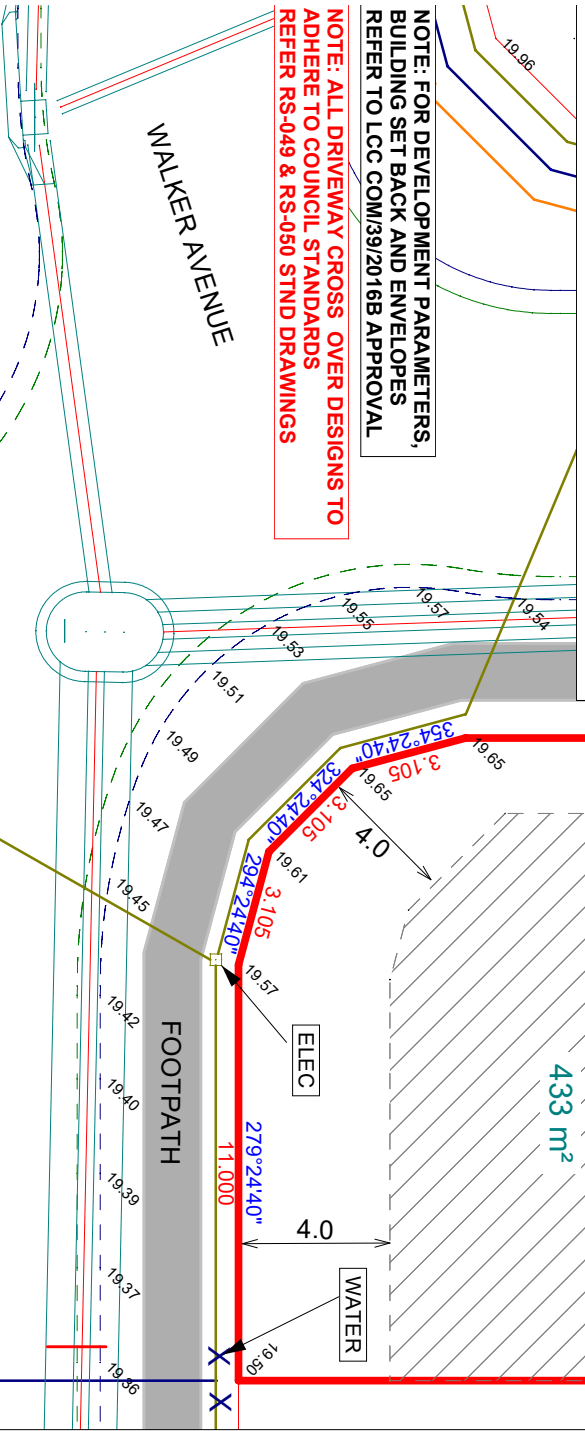


**NOTE: FOR DEVELOPMENT PARAMETERS, BUILDING SET BACK AND ENVELOPES REFER TO LCC COM/39/20/16B APPROVAL**

**NOTE: ALL DRIVEWAY CROSS OVER DESIGNS TO ADHERE TO COUNCIL STANDARDS REFER RS-049 & RS-050 STND DRAWINGS**



**DRAFT**

**DAVIDSON'S AT BELVIAH - STAGE 1E**

**LOT 127 DRAFT DISCLOSURE PLAN**

LEARMONTH DRIVE

FOOTPATH

WALKER AVENUE

DATE: 31/08/2020

DRAWN: AB

EMAIL: nvolkler@bigpond.net.au

PH: 0411 759 765

SCALE: 1:200 @ A4