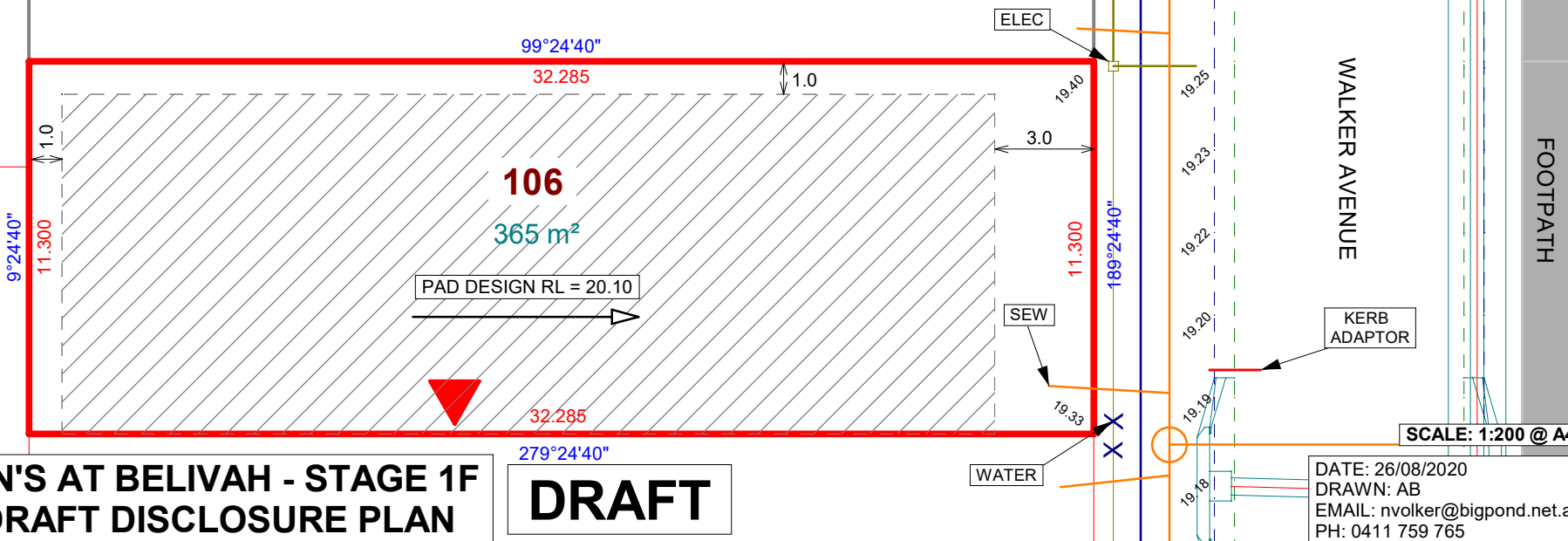
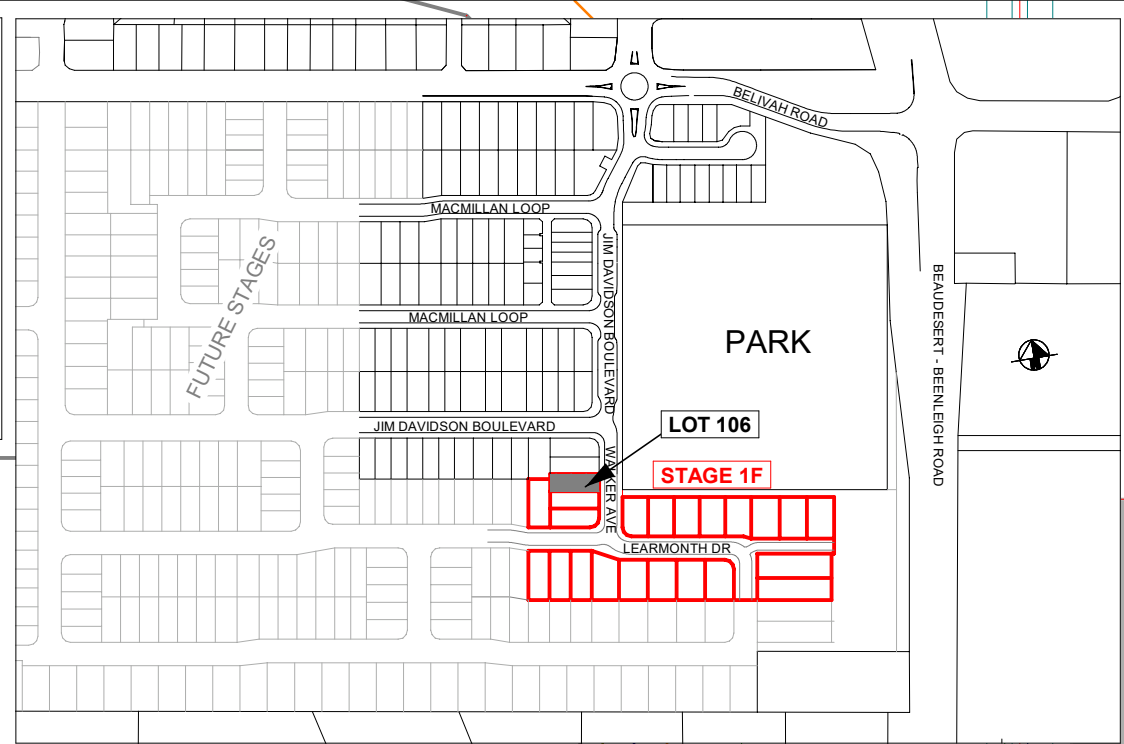


NOTE: ALL DRIVEWAY CROSS OVER DESIGNS TO ADHERE TO COUNCIL STANDARDS REFER RS-049 & RS-050 STND DRAWINGS

NOTE: FOR DEVELOPMENT PARAMETERS, BUILDING SET BACK AND ENVELOPES REFER TO LCC COM/39/2016B APPROVAL



**DAVIDSON'S AT BELIVAH - STAGE 1F
LOT 106 DRAFT DISCLOSURE PLAN**

DRAFT

DATE: 26/08/2020
 DRAWN: AB
 EMAIL: nvolker@bigpond.net.au
 PH: 0411 759 765