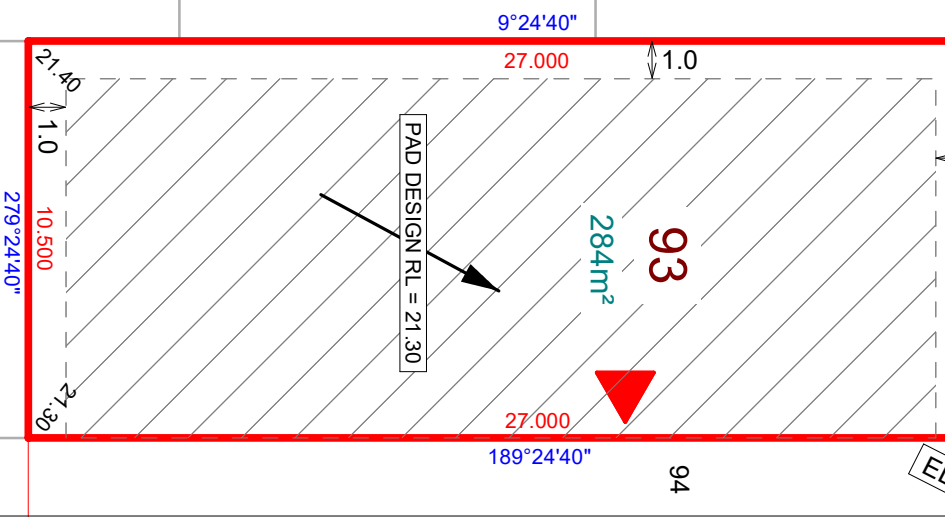
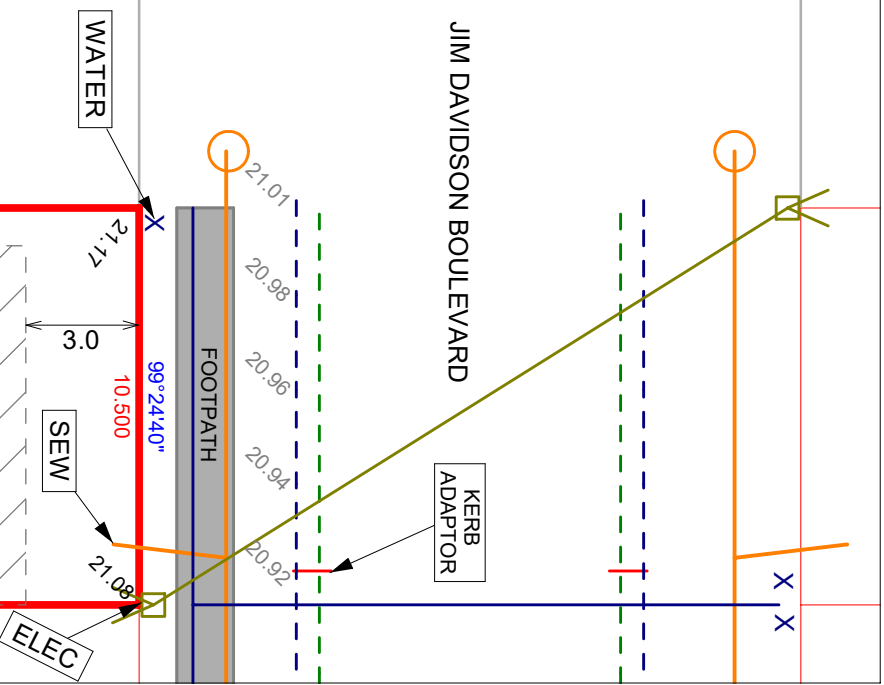


**NOTE: FOR DEVELOPMENT PARAMETERS, BUILDING SET BACK AND ENVELOPES REFER TO LCC COM/39/2016B APPROVAL**

**NOTE: ALL DRIVEWAY CROSS OVER DESIGNS TO ADHERE TO COUNCIL STANDARDS REFER RS-049 & RS-050 STND DRAWINGS**



**DRAFT**

**DAVIDSON'S AT BELVAH - STAGE 1E  
LOT 93 DRAFT DISCLOSURE PLAN**



SCALE: 1:200 @ A4

DATE: 30/03/2020  
DRAWN: AB  
EMAIL: nvolker@bigpond.net.au  
PH: 0411 759 765