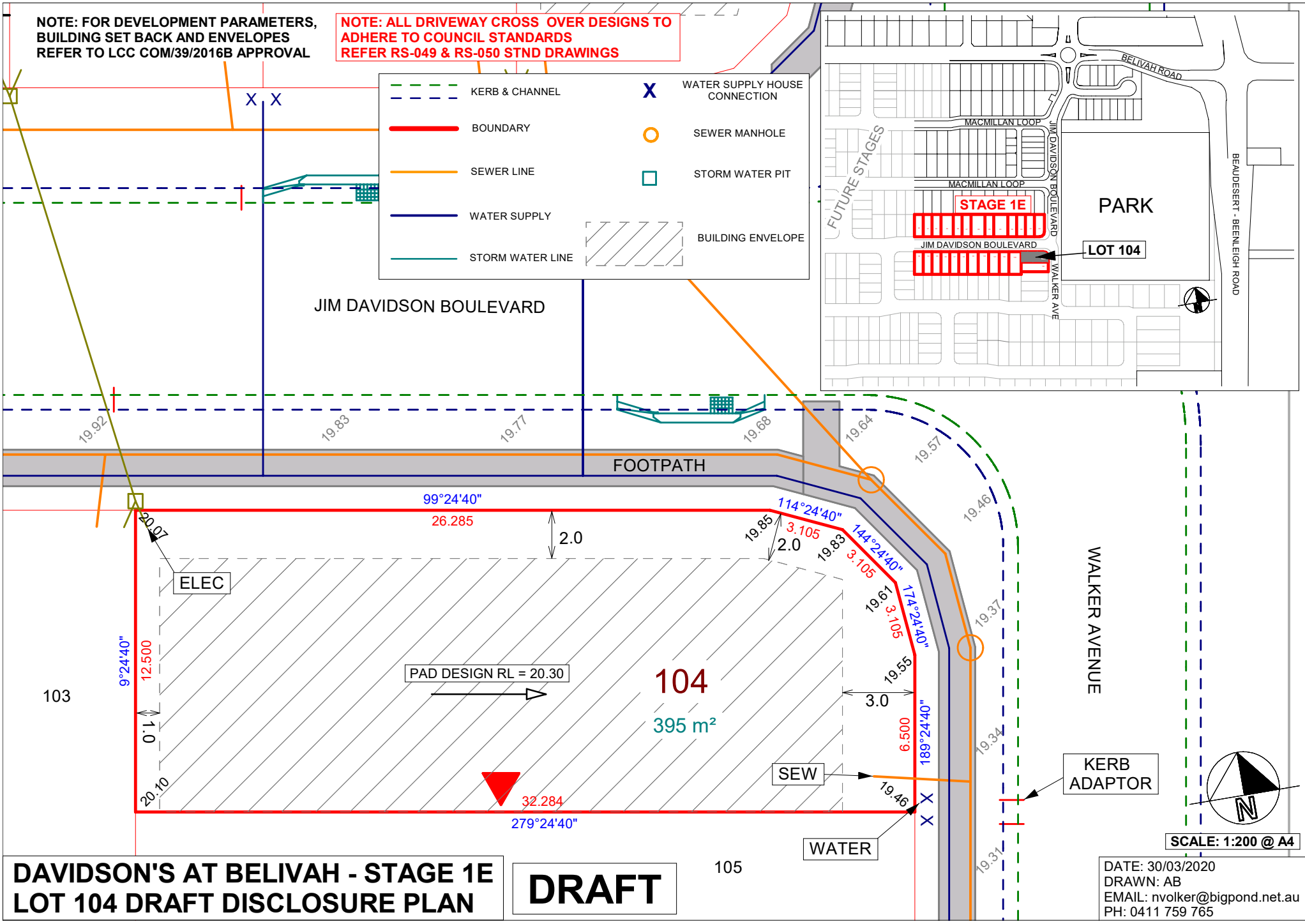
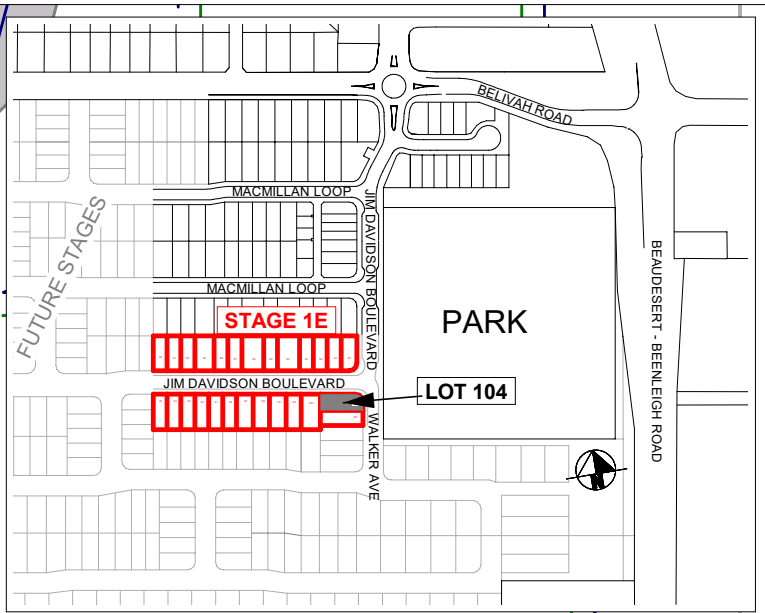
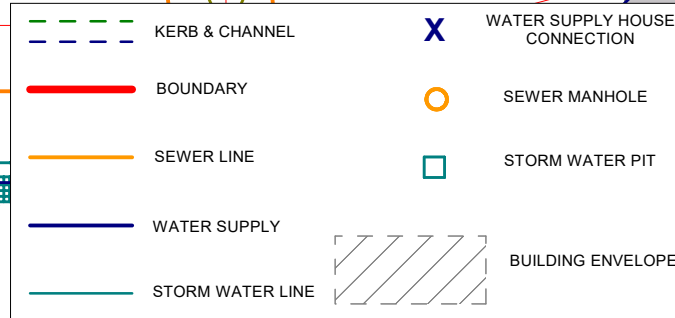


NOTE: FOR DEVELOPMENT PARAMETERS,  
BUILDING SET BACK AND ENVELOPES  
REFER TO LCC COM/39/2016B APPROVAL

NOTE: ALL DRIVEWAY CROSS OVER DESIGNS TO  
ADHERE TO COUNCIL STANDARDS  
REFER RS-049 & RS-050 STND DRAWINGS



**DAVIDSON'S AT BELIVAH - STAGE 1E  
LOT 104 DRAFT DISCLOSURE PLAN**

**DRAFT**