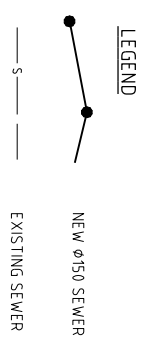


REFER TO DRAWING DB1B AC-S02 FOR CONTINUATION

COUNCIL Ref. No. - OW/14/1/2018

- NOTES:-
1. ALL SEWERS ARE  $\phi$ 150 uPVC S88 UNLESS NOTED OTHERWISE
  2. ALL MANHOLE COVERS ARE CIRCULAR CONCRETE INFILL STAMPED SANSEW UNLESS NOTED OTHERWISE
  3. MANHOLE DROPS ARE TYPE 'A' UNLESS NOTED OTHERWISE (250mm MAX)
  4. ALL HOUSE CONNECTIONS SANSEW UNLESS NOTED OTHERWISE



**NH Volker**  
 M. Reg. Sr.  
 Grad. Dip. U.R.P.  
 Professional Surveyor  
 Email: nvolker@bigpond.net.au  
 Mob. Phone 0411 759 785

**Associated Consultant**  
 PREMIERE ENGINEERING PTY LTD  
 LEVEL 1, 100 BRUNSWICK STREET  
 P.O. Box 361  
 FORTITUDE VALLEY QLD 4006

**CLIENT**  
 PLANLEX PTY. LTD.  
 P O Box 411  
 BEENLEIGH QLD 4207  
 Email - nvolker@bigpond.net

**PROJECT**  
 DAVIDSONS at BELIVAH  
 STAGE 1B  
 Belivah Road, BELIVAH

**DRAWING**  
 AS CONSTRUCTED SEWERAGE  
 RETICULATION AND HOUSE CONNECTION  
 PLAN - STAGE 1B - SHEET 1 of 3



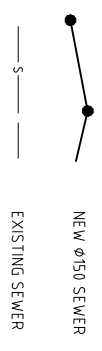
I, Neville H Volker hereby certify that the horizontal and vertical locations, and dimensions shown on this plan are a true and correct record of the AS Constructed information

Project Name: Davidsons at Belivah - Stage 1B  
 Company: BELIVAH PTY. LTD.  
 Consultant: NH Volker & Co Pty Ltd  
 Reg No: 2753  
 Signature: *NH Volker*  
 Date: 05/02/2019

DATE	01/19
DATE	01/19

DATE	01/19
DATE	01/19

LEGEND



- NOTES:-
1. ALL SEWERS ARE Ø150 uPVC S/N8 UNLESS NOTED OTHERWISE.
  2. ALL MANHOLE COVERS ARE CIRCULAR CONCRETE INFILL STAMPED 'SANSEW' UNLESS NOTED OTHERWISE.
  3. MANHOLE DROPS ARE TYPE 'A' UNLESS NOTED OTHERWISE (250mm MAX.)
  4. ALL HOUSE CONNECTIONS 'SANSEW' UNLESS NOTED OTHERWISE.

I, Neville H Volker, hereby certify that the horizontal and vertical locations, and dimensions shown on this plan are a true and correct record of the As Constructed information.

Project Name: Davidsons at Belivah - Stage 1B  
 Company: BELIVAH PTY LTD  
 Consultant: N H Volker & Co Pty Ltd  
 Reg No: 2753  
 Signature: *NH Volker* Date: 05/02/2019

COUNCIL Ref. No. - OW/14/1/2018

**NH Volker**  
 M. Reg. Sc.  
 Grad. Dip. U.R.P.  
 Professional Surveyor  
 Email: nvolker@bigpond.net.au Mbl. Phone 0411 759 765

**Associated Consultant**  
 PREMISE ENGINEERING PTY LTD  
 LEVEL 1, 100 BRUNSWICK STREET  
 P.O. Box 361  
 FORTITUDE VALLEY QLD 4006

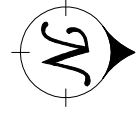
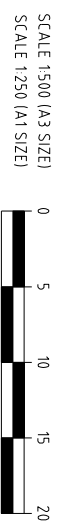
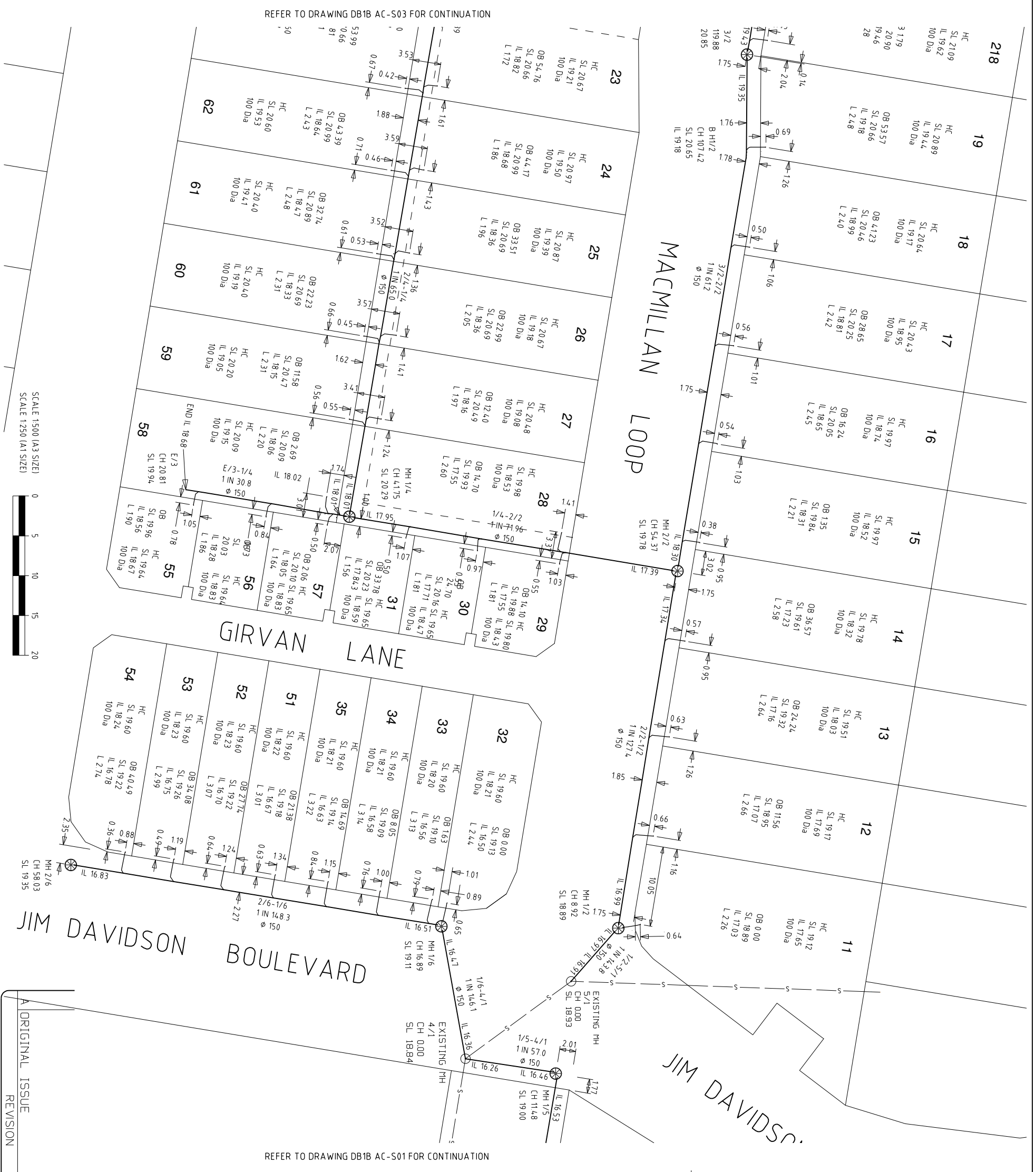
**CLIENT**  
 PLANLEX PTY. LTD.  
 P O Box 411  
 BEEFLEIGH QLD 4207  
 Email - nvolker@bigpond.net

**PROJECT**  
 DAVIDSONS at BELIVAH  
 STAGE 1B  
 Belivah Road, BELIVAH

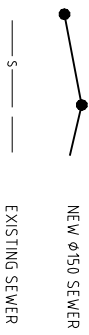
**DRAWING**  
 AS CONSTRUCTED SEWERAGE  
 RETICULATION AND HOUSE CONNECTION  
 PLAN - STAGE 1B - SHEET 2 of 3

**APPROVED**  
 AB / RMM  
 DATE: 01/19

REVISION	DATE
A	01/19



LEGEND



- NOTES:-
1. ALL SEWERS ARE Ø150 uPVC S/N8 UNLESS NOTED OTHERWISE
  2. ALL MANHOLE COVERS ARE CIRCULAR CONCRETE INFILL STAMPED 'SANSEW' UNLESS NOTED OTHERWISE
  3. MANHOLE DROPS ARE TYPE 'A' UNLESS NOTED OTHERWISE (250mm MAX)
  4. ALL HOUSE CONNECTIONS 'SANSEW' UNLESS NOTED OTHERWISE

I, Neville H Volker, hereby certify that the horizontal and vertical locations, and dimensions shown on this plan are a true and correct record of the As Constructed information.

Project Name: Davidsons at Bellivah - Stage 1B  
 Company: BELIVAH PTY LTD.  
 Consultant: N H Volker & Co Pty Ltd  
 Reg No: 2753  
 Signature: *NH Volker* Date: 05/02/2019



REFER TO DRAWING DB1B AC-S02 FOR CONTINUATION

COUNCIL Ref. No. - OW/14/1/2018

**NH Volker**  
 M. Reg. Sc.  
 Grad. Dip. U.R.P.  
 P/Cadastral Surveyor  
 Email: nvolker@bigpond.net.au Mbl. Phone 0411 759 765

**Associated Consultant**  
 PREMIERE ENGINEERING PTY LTD  
 LEVEL 1, 100 BRUNSWICK STREET  
 P.O. Box 361  
 FORTITUDE VALLEY QLD 4006

**CLIENT**  
 PLANLEX PTY. LTD.  
 P O Box 411  
 BEELENBURGH QLD 4207  
 Email - nvolker@bigpond.net

**PROJECT**  
 DAVIDSONS at BELIVAH  
 STAGE 1B  
 Bellivah Road, BELIVAH

**DRAWING**  
 AS CONSTRUCTED SEWERAGE  
 RETICULATION AND HOUSE CONNECTION  
 PLAN - STAGE 1B - SHEET 3 of 3



ORIGINAL ISSUE	01/19
REVISION	DATE

APPROVED	DATE
AB / RMM	01/19
DWG. NO.	REVISION
DB1B AC-S03	A